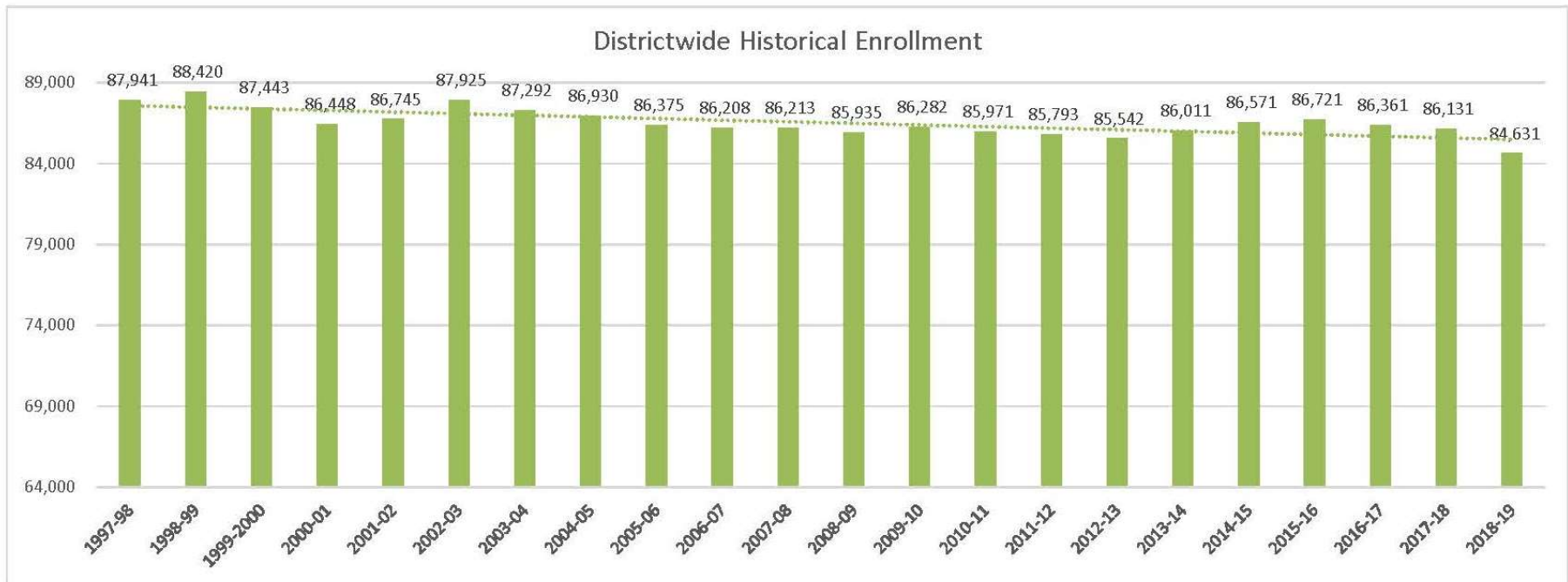
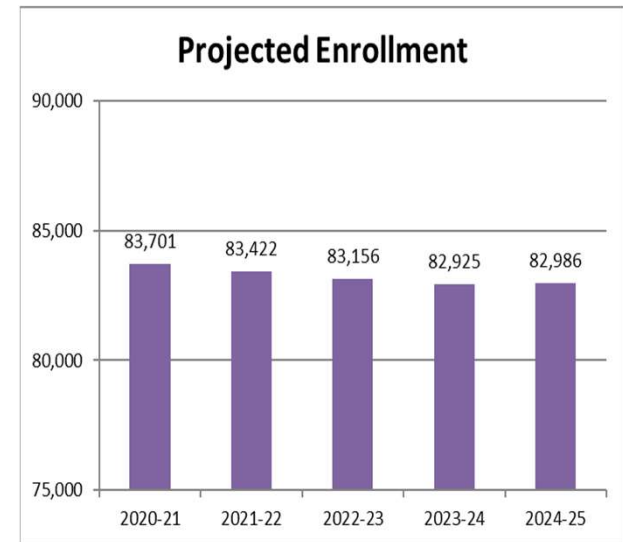
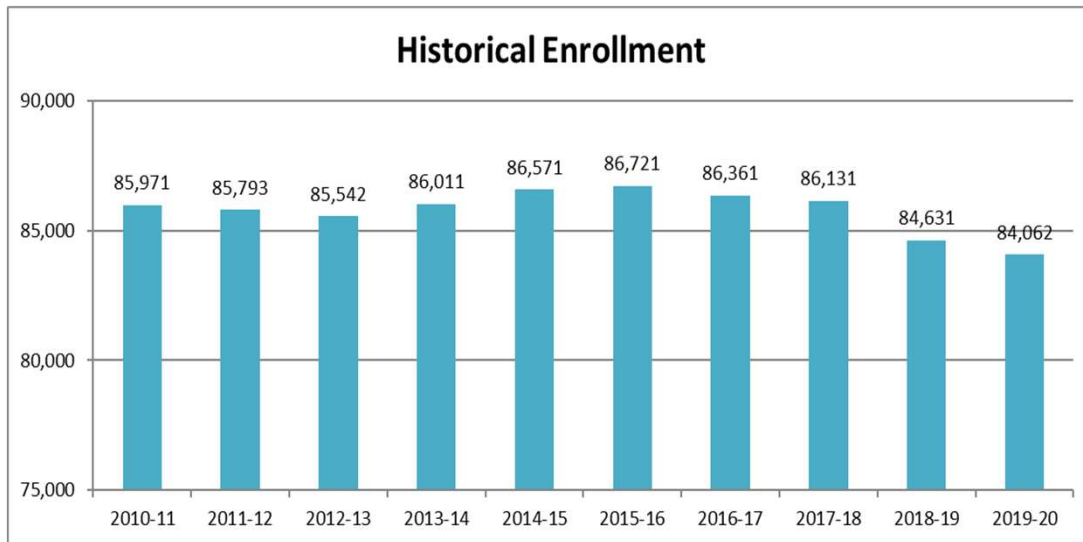


20 Yr Historical Enrollment (Membership)



Decrease of 3,310 students (-3.7%) over the last 20 years with downward trend projected into the near future.

Total Enrollment (Membership)



Decrease of 569 students in the 2019-20 school year falling from 84,631 students to 84,062 students, representing a 0.7% decrease.

Projections for the 2020-21 school year anticipate an overall decrease of 361 students. Charters are projected to increase by 128 with a loss of 489 for district-run schools.

Five Year Projections: 82,986, which will be an additional decrease of 1, 076 from the current school year.

Changes by Articulation Area (Actual and Projected)

Artic	Past 10 Year Change	Past 10 Year % Change	Past 1 Year Change	Past 1 Year % Change	Next Year Change	Next Year % Change	Projected 5 Year Change	Projected 5 Year % Change
Arvada	-1,072	-19.4%	-229	-4.9%	-510	-11.4%	-673	-15.1%
Specials	-72	-19.5%	36	13.7%	-23	-7.7%	-43	-14.4%
Jefferson	-519	-22.6%	-169	-8.7%	-117	-6.6%	-378	-21.2%
Pomona	-689	-17.6%	-79	-2.4%	-110	-3.4%	-185	-5.7%
Alameda	-965	-23.6%	-25	-0.8%	-80	-2.6%	-420	-13.4%
Columbine	-307	-6.6%	40	0.9%	-49	-1.1%	0	0.0%
Lakewood	-308	-6.6%	-160	-3.6%	-48	-1.1%	-200	-4.6%
Green Mountain	-145	-3.6%	55	1.4%	-43	-1.1%	-46	-1.2%
Chatfield	-427	-6.4%	-37	-0.6%	-51	-0.8%	-330	-5.3%
Dakota Ridge	-304	-6.3%	36	0.8%	-29	-0.6%	-168	-3.7%
Bear Creek	-661	-11.1%	-117	-2.2%	-32	-0.6%	-27	-0.5%
Conifer	-67	-2.7%	-9	-0.4%	-14	-0.6%	-46	-1.9%
Arvada West	-199	-4.1%	-12	-0.3%	-19	-0.4%	-72	-1.5%
Evergreen	61	2.0%	-51	-1.6%	-6	-0.2%	-99	-3.2%
Standley Lake	-449	-9.1%	-143	-3.1%	-8	-0.2%	-39	-0.9%
Wheat Ridge	-913	-18.4%	-40	-1.0%	-3	-0.1%	-98	-2.4%
Golden	95	2.2%	0	0.0%	-1	0.0%	100	2.2%
Charters	3,336	57.0%	136	1.5%	128	1.4%	433	4.7%
Ralston Valley	928	19.5%	221	4.1%	179	3.2%	625	11.0%
Options	768	20.3%	-22	-0.5%	475	10.4%	589	13.0%
Jeffco Subtotal	-5,245	-6.5%	-705	-0.9%	-489	-0.7%	-1,509	-2.0%
Charter Subtotal	3,336	57.0%	136	1.5%	128	1.4%	433	4.7%
Total	-1,909	-2.2%	-569	-0.7%	-361	-0.4%	-1,076	-1.3%

Table is sorted by Next Year % change

All but Columbine, Golden, and Ralston Valley Articulation Areas are projected to decrease over the next 5 years. Columbine is projected to remain unchanged and Golden and Ralston Valley are projected to increase. Options and Charters are anticipated to continue to increase.



April 1, 2020

To: Capital Asset Advisory Committee Membership

From: Tim Reed, Executive Director Facilities & Construction Management

Cc: Dr. Glass, K. Askelson, S. Bell, T. Schiff, S. Corbo, J. Hendricks, B. Huxley, B. Jones, N. Morrell H. Neal, N. Stewart, M. Wolsborn, T. Reed, R. Acree, File

Re: Activity Report for March 2020

This report will follow the basic format of CAAC meetings and provide an overview of the budget, Work in Progress, Communication and Planning & Property report.

2018 Capital Improvement Program Status:

Revenue:

\$	(326,490,000)	First Bond Issuance
\$	(50,165,349)	Premium on First Bond Issuance
\$	(9,068,416)	Interest Through January 31st
\$	(20,900,481)	FY 2020 Capital Transfer (COP P & I Payment Removed)
\$	(406,624,426)	

Expenses:

As of March 31, 2020

\$	90,390,194	Total Expended all Projects
\$	62,268,486	Total Encumbered all Projects

Charter Projects:

\$	24,219,054	Total Expended all Projects
\$	447,424	Total Encumbered all Projects

As of February 29, 2020

\$	88,833,470	Total Expended all Projects
\$	57,579,307	Total Encumbered all Projects

Charter Projects:

\$	24,289,260	Total Expended all Projects
\$	1,287,367	Total Encumbered all Projects

Due to cold weather and some snow in February billings were down at sites requiring outside work. These include Kendrick Lakes ES, Arvada HS and Wilmot ES. With better weather in March, billings are expected to increase.

To date there has been minimal impact from Covid-19 on the availability of labor or materials to on-going projects.



March 2020 Bid Results

These are the projects that have bid in March and are on the April 2, 2020 Board of Education consent agenda.

School	Type	Bid Amount	Over/(Under)
Adams ES	E&FR	\$ 726,725	\$ (47,181)
Arvada K8	E&FR	\$ 1,354,112	\$ (110,817)
Belmar School of Integrated Arts	E&FR	\$ 570,390	\$ 68,595
Columbine Hills ES	E&FR	\$ 743,000	\$ 153,291
Coronado ES	E&FR	\$ 1,722,000	\$ (2,174)
Dutch Creek ES	E&FR	\$ 1,041,909	\$ 167,045
Eiber ES	E&FR	\$ 989,700	\$ 206,329
Foothills ES	E&FR	\$ 801,900	\$ 114,920
Fremont ES	E&FR	\$ 870,763	\$ 103,511
Green Gables ES	E&FR	\$ 1,128,000	\$ 56,831
Hutchison ES	E&FR	\$ 1,347,800	\$ (43,735)
Lukas ES	E&FR	\$ 899,016	\$ 86,674
Ralston ES	E&FR	\$ 709,860	\$ 41,605
Semper ES	E&FR	\$ 1,243,428	\$ 65,229
Vivian ES	E&FR	\$ 1,301,278	\$ 167,859
Welchester ES	E&FR	\$ 1,355,918	\$ 138,115
Witt ES	E&FR	\$ 1,497,202	\$ 280,802
Green Mountain HS	A/R	\$ 11,007,742	\$ 1,092,009
Districtwide LED at 18 Sites	DW	\$ 2,735,735	\$ 335,716
		\$ 32,046,478	\$ 2,874,624

E&FR Efficiency & Ready, A/R Addition, Renovation, DW Districtwide

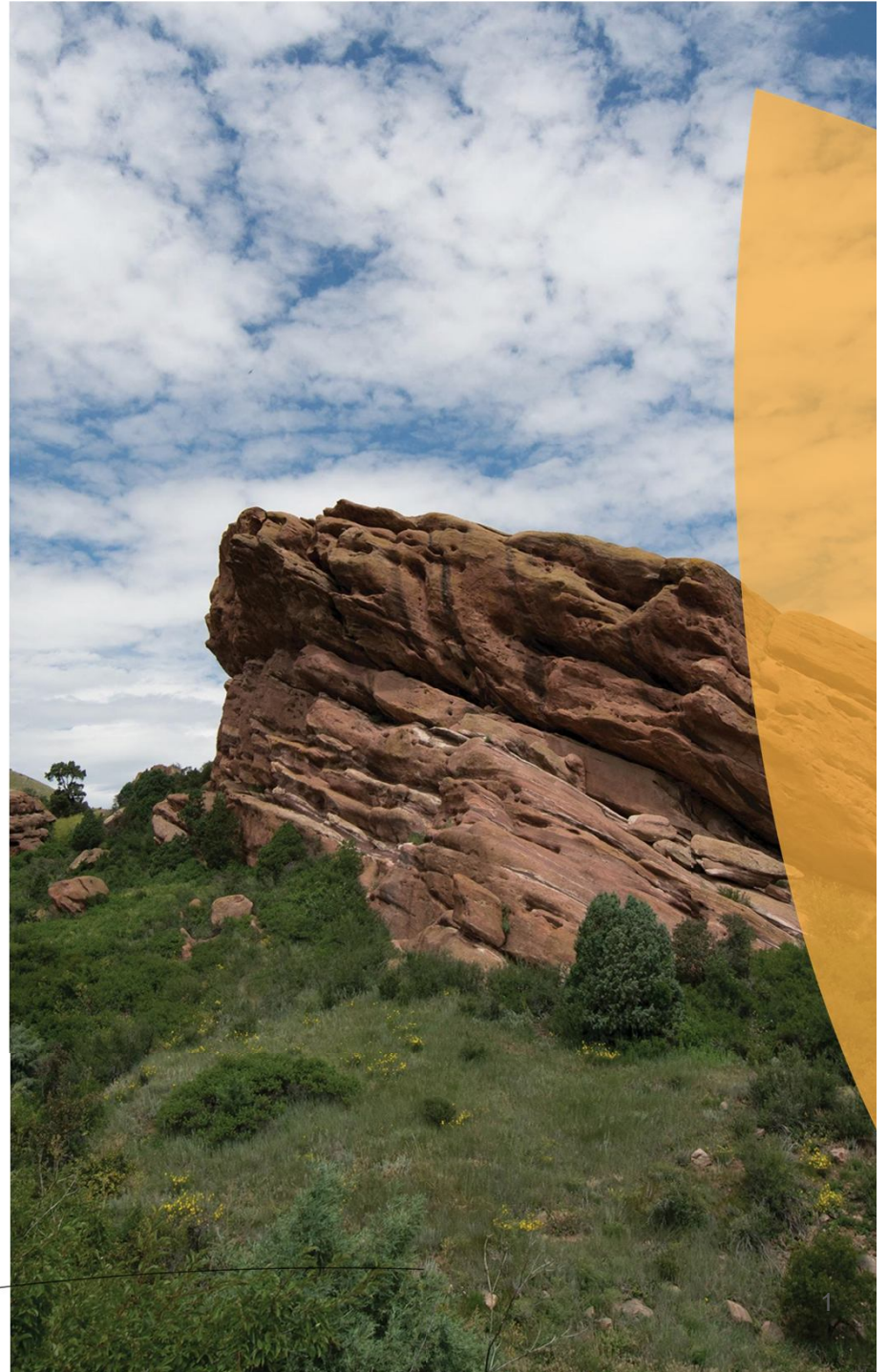
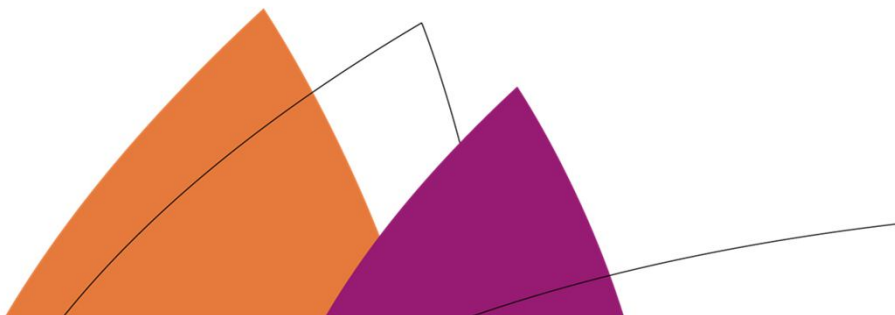
As the bidding took place there were fewer bidders. This can be attributed to the contractors' inventory of work increasing. April has only two significant projects bidding. On a percentage basis the overage is 9% of the established 2018 construction budget.

Work in Progress Follows



CAAC Construction Update

4-2-2020



2020 - PROJECTS

58 of 88	Elementary Schools
11 of 15	High Schools
6 of 17	Middle Schools
2 of 2	7-12 Schools
2 of 6	K-8 Schools
7 of 18	Option Schools
1 of 4	Athletic Facilities

2

Columbine HS – Addition EIDOS – CMGC Swinerton

Construction
\$14,185,271
124,765SF
\$114/SF



Construction

2020 HS Field Improvements – 6 Schools HCM – CMGC ECI



ARVADA WEST HIGH SCHOOL
11595 ALLENDALE DRIVE, ARVADA, CO 80004



COLUMBINE HIGH SCHOOL
6201 S PIERCE STREET, LITTLETON, CO 80123



GOLDEN HIGH SCHOOL
701 24TH STREET, GOLDEN, CO 80401



GREEN MOUNTAIN HIGH SCHOOL
13175 WEST GREEN MOUNTAIN DRIVE, LAKEWOOD, CO 80228



POMONA HIGH SCHOOL
8101 WEST POMONA DRIVE, ARVADA, CO 80005



STANDLEY LAKE HIGH SCHOOL
9300 WEST 104TH AVENUE, WESTMINSTER, CO 80021

Arvada HS - Addition HCM - CMGC Saunders

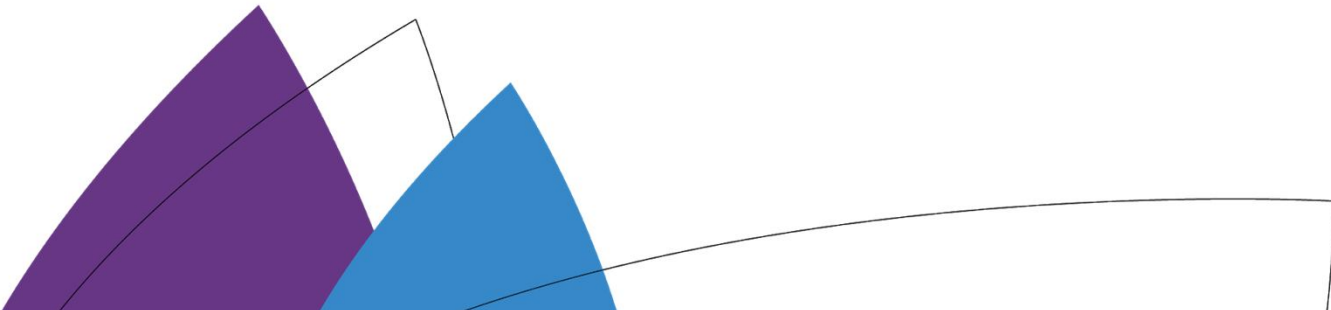
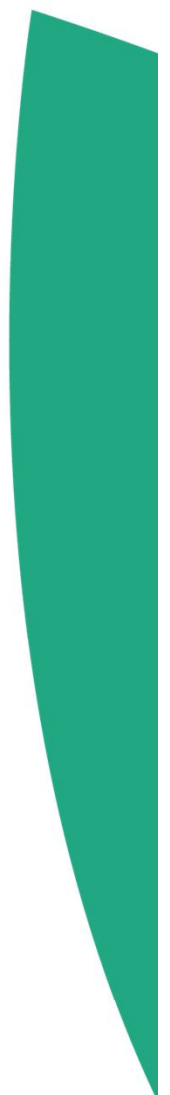
Construction
\$12,971,690
49,194SF
\$263.68/SF



Arvada HS - Addition HCM - CMGC Saunders



Arvada HS - Addition HCM - CMGC Saunders



Fairmount ES – Gym Floor EUA – Colorado Floorworks

Complete



Temporary Classroom Removal (25)



Lawrence ES (2), Carmody (2), Weber (2), Governor's Ranch (4), Slater (4), Vivian (4) North Arvada MS (4), PEAK (3)

Three Creeks K8 – Addition HCM – CMGC Phipps

\$4,589,755
15,137SF
\$303.21/SF
May 2020
Completion



Wilmot ES – Addition
DLR – CMGC Himmelman

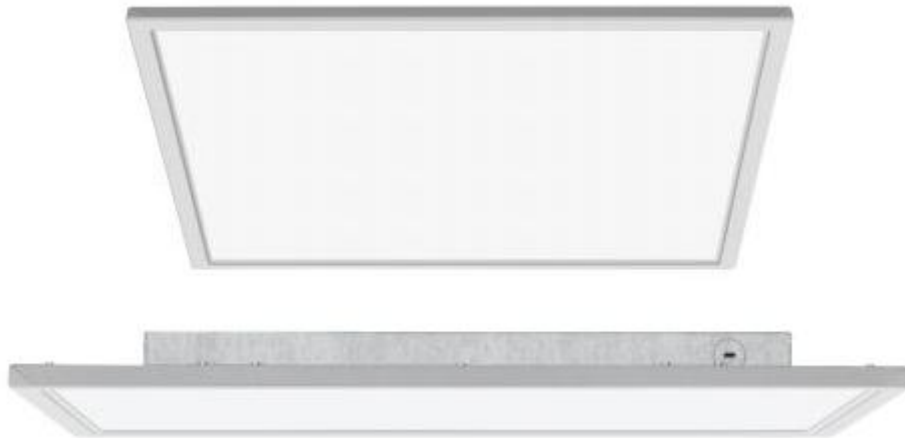
Construction
\$6,694,785.
16,890SF
\$396.38/SF
August 2020
Completion



DW LED - 18 Schools

Ackerman - CMGC Weifield

Construction
\$2,735,735



1. **Columbine Hills ES**
2. Deane ES
3. Devinny ES
4. Dennison ES
5. **Fitzmorris ES**
6. Kullerstrand ES
7. **Lasley ES**
8. Maple Grove ES
9. **Patterson International**
10. Peck ES
11. Powderhorn ES
12. **Ryan ES**
13. Secrest ES
14. Sheridan Green ES
15. **Stott ES**
16. Vanderhoof ES
17. Westgate ES
18. **Westridge ES**



Kendrick Lakes ES – Replacement Larson Incitti – GC Roche

Construction
\$16,736,000
58,537 SF
\$286/SF

Dec. 2020
Completion



Chiller Replacement – Golden HS Columbine – K&M



Construction

Golden HS
\$434,930

Bid 12/12/19

DW Roofing I - Patterson ES, Par ES
WJE -United Materials, Flynn



Construction
Patterson ES
\$467,489

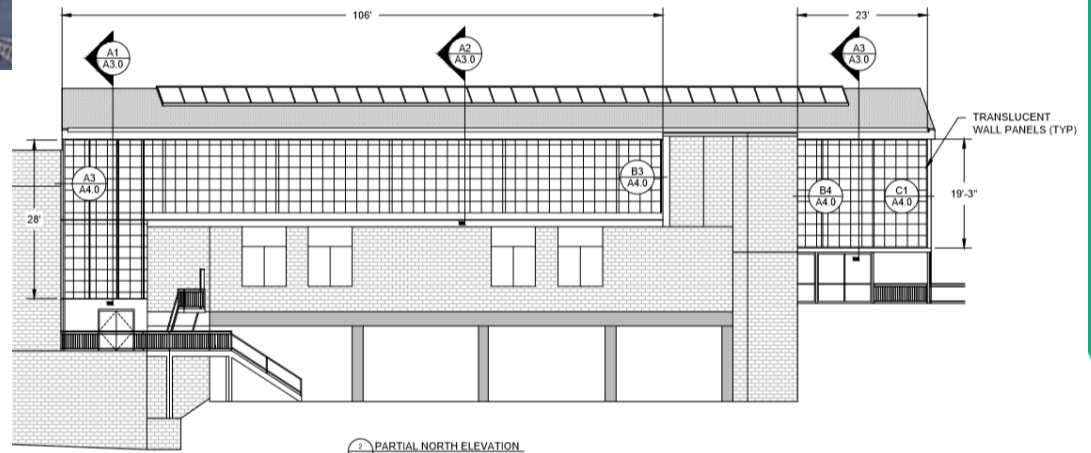
Parr ES
\$617,180

Bid 1/07/20

DW Roofing II – Kullerstrand ES,
Carmody MS, Evergreen HS
Rooftech – Grabau, B&M, Powers

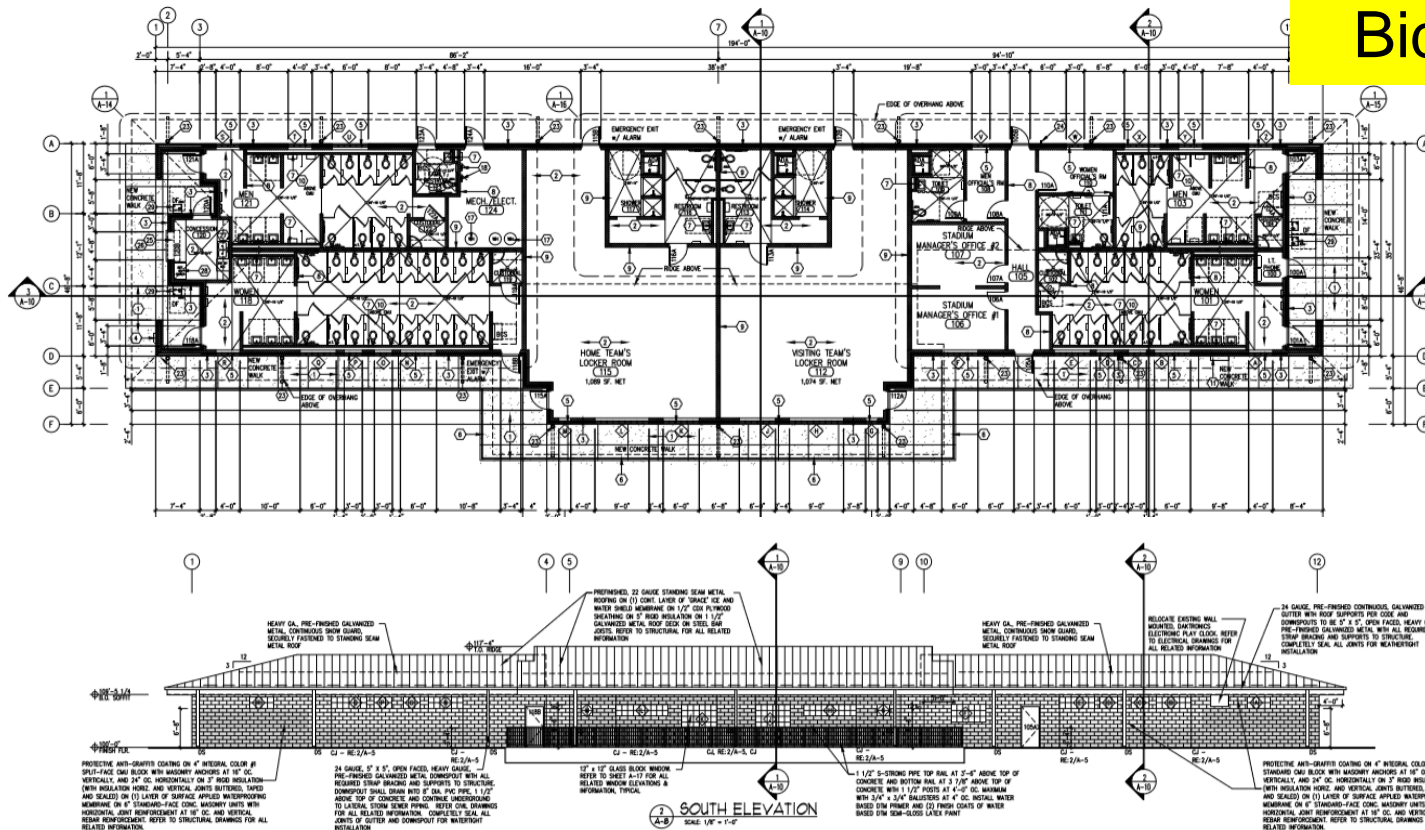
Construction
\$193,082
KES
\$220,960
CMS
\$148,700
EHS

Bid 2/5/20



Trailblazer Locker Room & Press Box Mellin & Assoc. – W.E. O’Neil

Construction
\$3,225,500
Bid 2/5/20



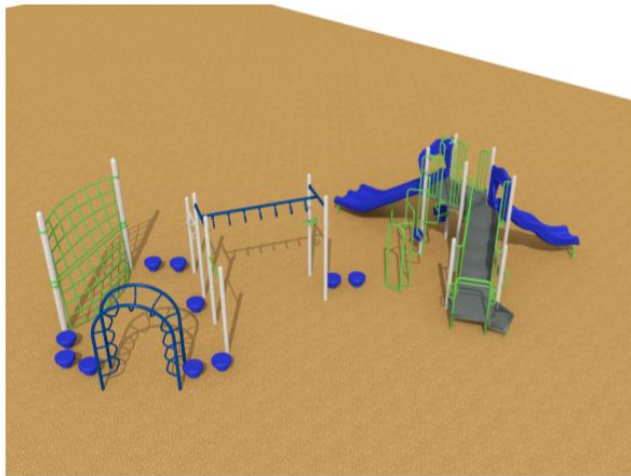
DW Playgrounds (9) Sites

- 1 - (Allendale, Stott, Vanderhoof) Richdale
- 2 - (Kendallvue, Stony Creek, Westridge) T2
- 3 - (Sheridan Green, Fletcher Miller) Goodland

Construction
\$1,081,847

Bid 2/25/20

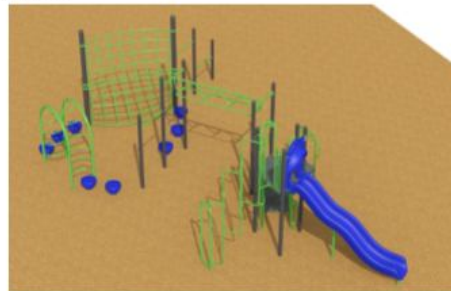
Design Concepts – Richdale, T2 & Goodland



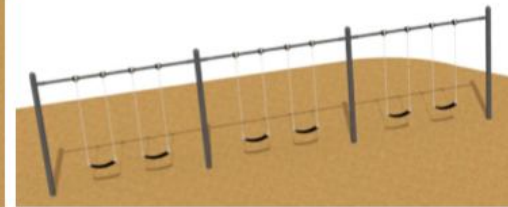
① KENDALLVUE PLAY STRUCTURE
Scale: NYS



① GAMETIME PLAY EQUIPMENT AT FLETCHER MILLER SCHOOL
Scale: NYS To Scale



② LITTLE TIKERS PLAY EQUIPMENT AT SHERIDAN GREEN ELEMENTARY SCHOOL
Scale: NYS To Scale



2018 BOND PROGRAM COMMUNICATIONS UPDATE

CAPITAL ASSET ADVISORY COMMITTEE

APRIL 2020

COMPLETED WORK:

- Added "Project Status" to JeffcoBuilds website
 - Quarterly project status documents will be changed when updated
 - Located on the "find my school" page and under the articulation areas (image from website below)
- Working with Wilmot E.S. to plan a "virtual beam signing"
 - Beam placed outside of school right now for teachers to sign when they have to go to the building to get supplies (image from a teacher below)

Website analytics:

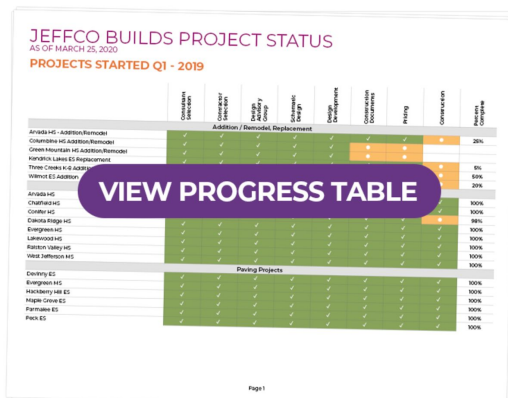
Jeffcobuilds.org and all pages with "jeffcobuilds" in the URL (ie sub-pages)

Jeffco Builds page performance	Page views	Unique page views
Feb. 2020	1,688	1,393
March 2020	1,891	1,608
% change	12% increase	15% increase

UPCOMING WORK:

- Executing our "virtual beam signing" for Wilmot:
 - Will livestream on Facebook, have a video to share for after the event, and pitch to the media
- Working with our architects and construction partners to share progress of our projects and that we are continuing our construction
- Working with our videographer to document progress of projects in the community

TRACK OUR PROGRESS





Planning & Property

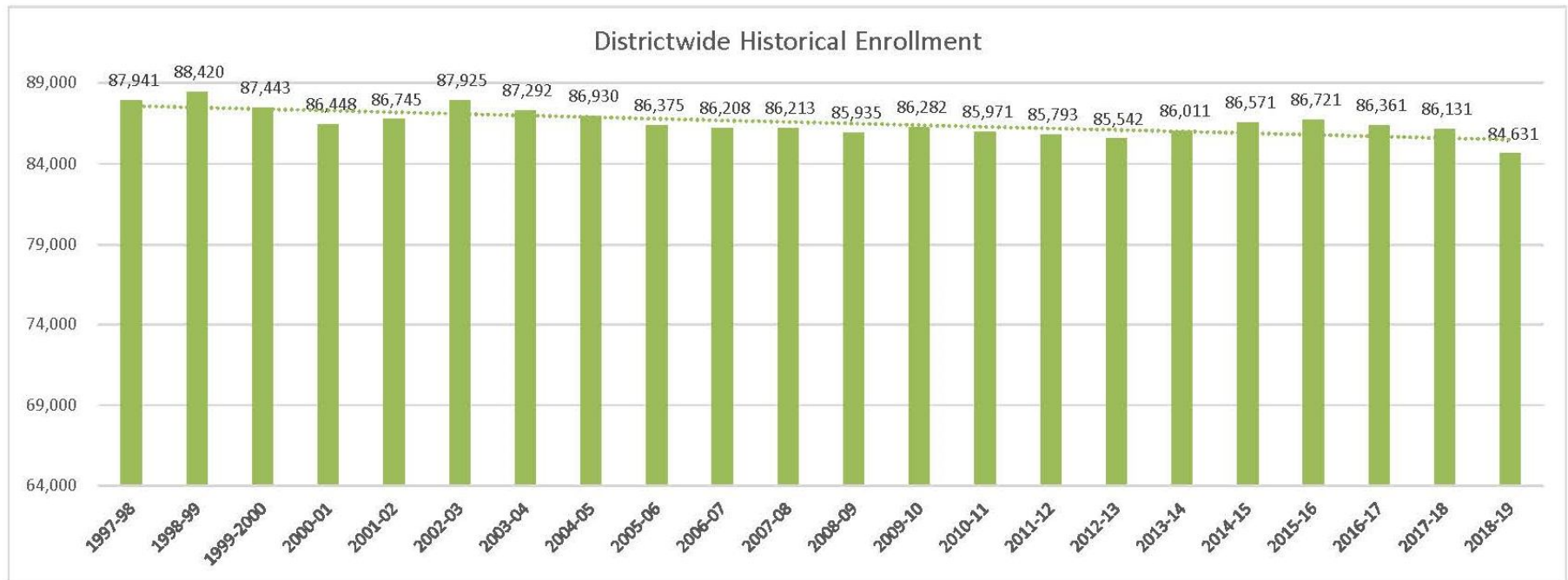
The 2019-2020 Enrollment Report went to the Board of Education in March. The report will be posted on the public website.

The annual 2019-2020 Summary of Findings will be complete by the end of April and posted on the public website after review by the Board of Education.

Earthwork and infrastructure has begun on the Red Rocks Ranch site located at Morrison Road and C-470. The district received 8 of the 20+ contiguous acres that it will eventually receive as the developer submits additional fillings to Jefferson County.

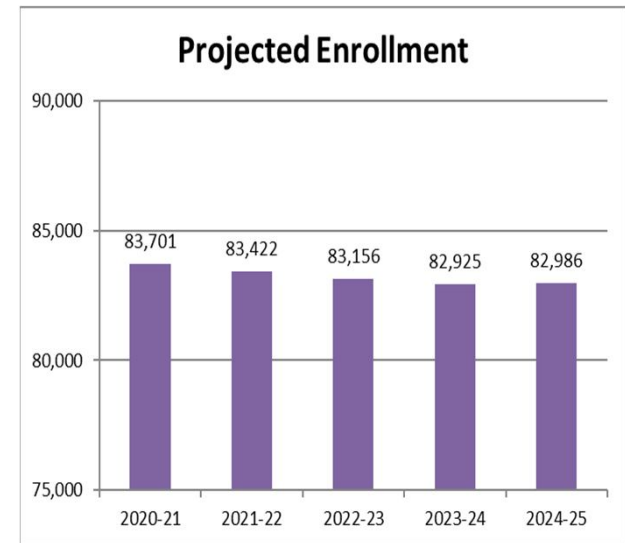
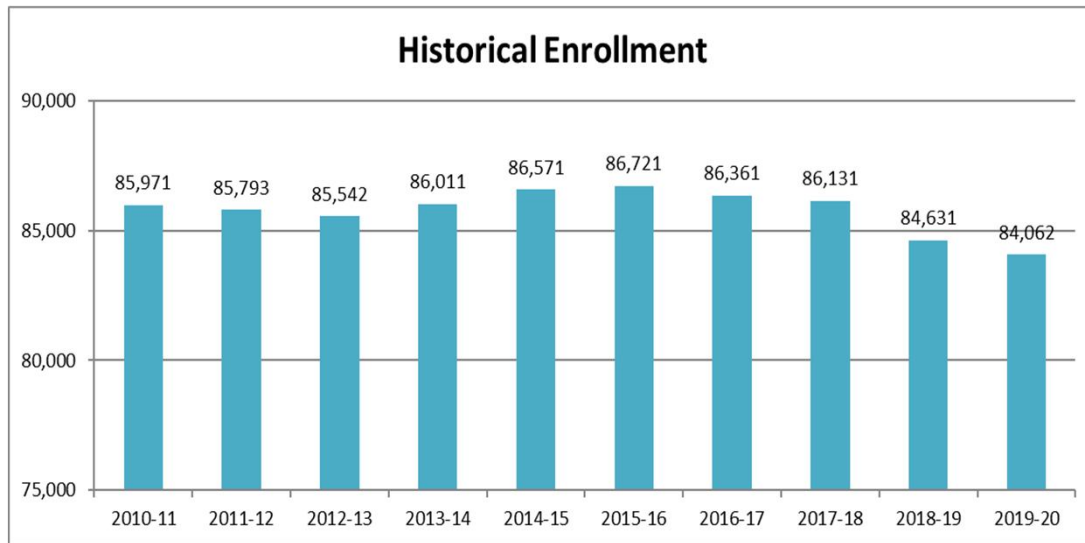
Enroll Report Overview Follows.

20 Yr Historical Enrollment (Membership)



Decrease of 3,310 students (-3.7%) over the last 20 years with downward trend projected into the near future.

Total Enrollment (Membership)



Decrease of 569 students in the 2019-20 school year falling from 84,631 students to 84,062 students, representing a 0.7% decrease.

Projections for the 2020-21 school year anticipate an overall decrease of 361 students. Charters are projected to increase by 128 with a loss of 489 for district-run schools.

Five Year Projections: 82,986, which will be an additional decrease of 1,076 from the current school year.

Changes by Articulation Area

(Actual and Projected)

Artic	Past 10 Year Change	Past 10 Year % Change	Past 1 Year Change	Past 1 Year % Change	Next Year Change	Next Year % Change	Projected 5 Year Change	Projected 5 Year % Change
Arvada	-1,072	-19.4%	-229	-4.9%	-510	-11.4%	-673	-15.1%
Specials	-72	-19.5%	36	13.7%	-23	-7.7%	-43	-14.4%
Jefferson	-519	-22.6%	-169	-8.7%	-117	-6.6%	-378	-21.2%
Pomona	-689	-17.6%	-79	-2.4%	-110	-3.4%	-185	-5.7%
Alameda	-965	-23.6%	-25	-0.8%	-80	-2.6%	-420	-13.4%
Columbine	-307	-6.6%	40	0.9%	-49	-1.1%	0	0.0%
Lakewood	-308	-6.6%	-160	-3.6%	-48	-1.1%	-200	-4.6%
Green Mountain	-145	-3.6%	55	1.4%	-43	-1.1%	-46	-1.2%
Chatfield	-427	-6.4%	-37	-0.6%	-51	-0.8%	-330	-5.3%
Dakota Ridge	-304	-6.3%	36	0.8%	-29	-0.6%	-168	-3.7%
Bear Creek	-661	-11.1%	-117	-2.2%	-32	-0.6%	-27	-0.5%
Conifer	-67	-2.7%	-9	-0.4%	-14	-0.6%	-46	-1.9%
Arvada West	-199	-4.1%	-12	-0.3%	-19	-0.4%	-72	-1.5%
Evergreen	61	2.0%	-51	-1.6%	-6	-0.2%	-99	-3.2%
Standley Lake	-449	-9.1%	-143	-3.1%	-8	-0.2%	-39	-0.9%
Wheat Ridge	-913	-18.4%	-40	-1.0%	-3	-0.1%	-98	-2.4%
Golden	95	2.2%	0	0.0%	-1	0.0%	100	2.2%
Charters	3,336	57.0%	136	1.5%	128	1.4%	433	4.7%
Ralston Valley	928	19.5%	221	4.1%	179	3.2%	625	11.0%
Options	768	20.3%	-22	-0.5%	475	10.4%	589	13.0%
Jeffco Subtotal	-5,245	-6.5%	-705	-0.9%	-489	-0.7%	-1,509	-2.0%
Charter Subtotal	3,336	57.0%	136	1.5%	128	1.4%	433	4.7%
Total	-1,909	-2.2%	-569	-0.7%	-361	-0.4%	-1,076	-1.3%

Table is sorted by Next Year % change

All but Columbine, Golden, and Ralston Valley Articulation Areas are projected to decrease over the next 5 years. Columbine is projected to remain unchanged and Golden and Ralston Valley are projected to increase. Options and Charters are anticipated to continue to increase.



Facilities & Construction Management Work Impact

During this period with students and staff away from district buildings, the facilities department has also limited the number of personnel working. Custodial Services disinfected the buildings as soon as they were vacated. During Spring Break, custodial personnel were in the buildings only if there was construction, furniture deliveries, a food program or pre-scheduled event. Otherwise, staff performed a building check at the end of the week. Starting the week of March 30, Custodial Services are staffing all buildings from 7AM to 3:30PM Monday thru Friday with a single custodian.

Site Maintenance has been preparing for spring including fertilizing, irrigation preparation and critical work orders. The department has been divided into two groups one working one week, the other the next. Building Maintenance has been primarily on-call, with only minimal staff working. Painting, roof repair and electronics are the primary groups working. Administrators for both maintenance groups are going through outstanding work orders that can be accomplished now instead of over the summer.

Construction Management personnel are working either out of Building 4 or remotely, site visits, Owner/Architect/Contractor meetings are continuing mostly using video conferencing. Review meetings, are taking place the same way. Projects in design or under construction are continuing normally.

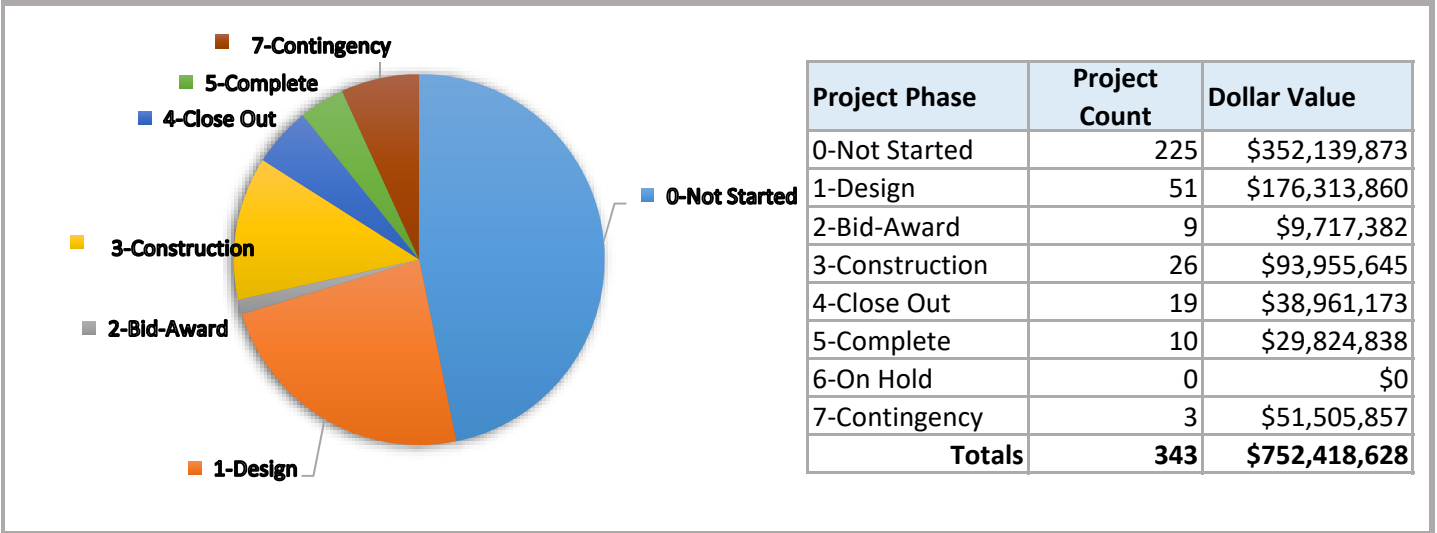
Environmental Services has reporting and required maintenance at water/wastewater facilities that has kept most of the staff working in the field, administrative staff are primarily working remotely.

Program Financials and Last Month's Meeting Notes Follow



2019-2023 (H) Bond Program 1

Program Dollar Value by Phase



Program Narrative

The 2019 - 2024 (H) Bond Program is a capital renewal bond program voted on and passed in November of 2018.

49% of defined bond projects have been initiated as of March 2020.

Program Float Report

Priority	Facility Name	Project ID	Project Name	Finish Date	
				Target	Forecast

Program Contingency and Remaining Funds

Program Contingency (Unallocated)	Forecast Remaining Funds in Projects	Net Remaining Program Funds
\$51,505,857	\$ (18,818,335.18)	\$ 32,687,521.82

2019-2023 (H) Bond Program 1

Remaining Projects

Plan Year: 2019

Project Description	Phase
H Adams ES FF&E	1-Design
H Alameda HS Addition & General Upgrades	1-Design
H Charter Addenbrooke Classical Academy General Upgra	1-Design
H Charter Collegiate Academy of Colorado General Upgrad	1-Design
H Charter Mountain Phoenix Community School General U	1-Design
H Columbine HS Addition & General Upgrades	1-Design
H Green Mountain HS Addition & General Upgrades	1-Design
H North Area Transportation-Joyce Renovation	1-Design
H Arvada HS Addition & General Upgrades	3-Construction
H Arvada K8 FF&E	3-Construction
H DW Curtain Riggings	3-Construction
H DW FF&E Allocation	3-Construction
H Kendrick Lakes ES Replace School	3-Construction
H Three Creeks K-8 Addition & General Upgrades	3-Construction
H West Jefferson MS FF&E	3-Construction
H Wilmot ES Addition & General Upgrades	3-Construction
H Alameda Int'l Jr-Sr Asbestos Abate Ph 1	4-Close Out
H Creighton MS FF&E	4-Close Out
H DW Fire Alarms	4-Close Out
H DW Flooring	4-Close Out
H DW Gym Divider Curtains	4-Close Out
H DW HVAC	4-Close Out
H DW IT Cameras	4-Close Out
H DW Irrigation	4-Close Out
H DW Modular Bldg Removal	4-Close Out
H DW Paving	4-Close Out
H DW Playgrounds	4-Close Out
H DW Roofing	4-Close Out
H DW Site Improvements	4-Close Out
H DW Site Lighting	4-Close Out
H Everitt MS Library Renovation	4-Close Out
H Ken Caryl MS FF&E	4-Close Out
H Pomona HS FF&E	4-Close Out
H Summit Ridge MS FF&E	4-Close Out
H Bond Hazardous Material Contingency	7-Contingency
H Program Contingency	7-Contingency

Plan Year: 2020

Project Description	Phase
H DW Fire Sprinklers Replacement	0-Not Started
H Kendrick Lakes ES FF&E	0-Not Started
H Pomona HS Addition & General Upgrades	0-Not Started
H 581 Conference Place Reopen Phase 2	1-Design
H Adams ES Efficiency & Future Ready	1-Design
H Bell MS Addition & General Upgrades	1-Design
H Belmar School of Integ. Arts FF&E	1-Design
H Brady Exploration School Efficiency & Future Ready	1-Design
H CTE South New Bldg	1-Design
H Charter Compass Montessori Wheat Ridge General Upgr	1-Design
H Charter Excel Academy Charter School General Upgrade	1-Design
H Charter Lincoln Academy Charter School General Upgrad	1-Design

Project Description	Phase
H DW Modular Bldg Removal 2020	0-Not Started
H Ken Caryl MS FACS CR + Bldg Signage	2-Bid-Award

Plan Year: 2020

Project Description	Phase
H Charter Montessori Peaks Academy General Upgrades	1-Design
H Charter Rocky Mountain Deaf School General Upgrades	1-Design
H Columbine Hills ES Efficiency & Future Ready	1-Design
H Conifer HS Addition & General Upgrades	1-Design
H Conifer HS FF&E	1-Design
H Coronado ES Efficiency & Future Ready	1-Design
H Coronado ES FF&E	1-Design
H DW Elevator Upgrades	1-Design
H DW Flooring 2020-II	1-Design
H DW LED Lighting - Interior	1-Design
H DW Network Upgrades	1-Design
H DW Paving 2020-I	1-Design
H DW Paving 2020-II	1-Design
H Eiber ES FF&E	1-Design
H Foothills ES FF&E	1-Design
H Foster ES Addition & General Upgrades	1-Design
H Fremont ES FF&E	1-Design
H Green Mountain HS FF&E	1-Design
H Jefferson HS Addition & General Upgrades	1-Design
H Lukas ES Efficiency & Future Ready	1-Design
H Lukas ES FF&E	1-Design
H Lumberg ES Addition & General Upgrades	1-Design
H Manning School Addition & General Upgrades	1-Design
H Parmalee ES Addition & General Upgrades	1-Design
H Semper ES Efficiency & Future Ready	1-Design
H Stober ES Efficiency & Future Ready	1-Design
H Stober ES FF&E	1-Design
H Three Creeks K-8 FF&E	1-Design
H Wayne Carle MS Addition & General Upgrades	1-Design
H Welchester ES FF&E	1-Design
H West Jefferson MS Efficiency & Future Ready	1-Design
H Wilmot ES FF&E	1-Design
H Witt ES Efficiency & Future Ready	1-Design
H Witt ES FF&E	1-Design
H Arvada K-8 Efficiency & Future Ready	2-Bid-Award
H Belmar ES Efficiency & Future + Paving	2-Bid-Award
H DW Flooring 2020-I	2-Bid-Award
H Eiber ES Efficiency & Future Ready	2-Bid-Award
H Fremont ES Efficiency & Future Ready	2-Bid-Award
H Green Gables ES Efficiency & Future Ready	2-Bid-Award
H Hackberry Hill ES Efficiency & Future Ready	2-Bid-Award
H Hutchinson ES Efficiency & Future Ready	2-Bid-Award
H Arvada HS FF&E	3-Construction
H DW Field Improvements	3-Construction
H DW HVAC 2020	3-Construction
H DW IT Cameras 2020	3-Construction
H DW Playgrounds 2020	3-Construction
H DW Roofing 2020-I	3-Construction



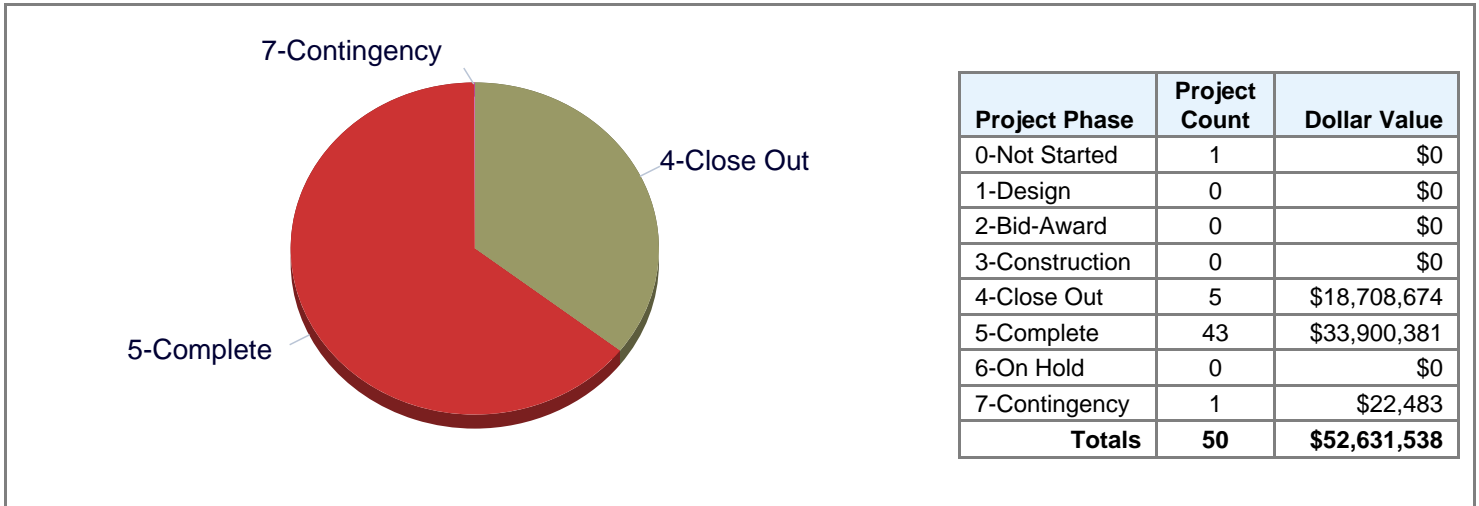
Project Description	Phase
H DW Roofing 2020-II	3-Construction
H DW Security Glass 2020-I	3-Construction
H Dutch Creek ES Efficiency & Future Ready	3-Construction
H Dutch Creek ES FF&E	3-Construction
H Foothills ES Efficiency & Future Ready	3-Construction
H Green Gables ES FF&E	3-Construction
H Hutchinson ES FF&E	3-Construction
H Ralston ES Efficiency & Future Ready	3-Construction
H Trailblazer Stadium Efficiency & Future Ready	3-Construction
H Vivian ES Efficiency & Future Ready	3-Construction
H Welchester ES Efficiency & Future Ready	3-Construction
H Westridge ES HVAC	3-Construction
H Charter New America School New Building (formerly General Upgrades)	4-Close Out
H Bond Premium Contingency	7-Contingency

Plan Year: 2021

Project Description	Phase
H Columbine HS FF&E	0-Not Started

18M Capital Program 2018-2019

Program Dollar Value by Phase



Program Narrative

The 18M Capital Program 2018 -19 represents Fiscal Year 2018 planned projects that are expected to complete in Fiscal Year 2019. These projects are reviewed by the Capital Asset Advisory Committee.

Program Float Report

Priority	Facility Name	Project ID	Project name	Finish Date	
				Target	Forecast

Program Contingency and Remaining Funds

Program Contingency (Unallocated)	Forecast Remaining Funds in Projects	Net Remaining Program Funds
\$22,483	\$26,049	\$48,531

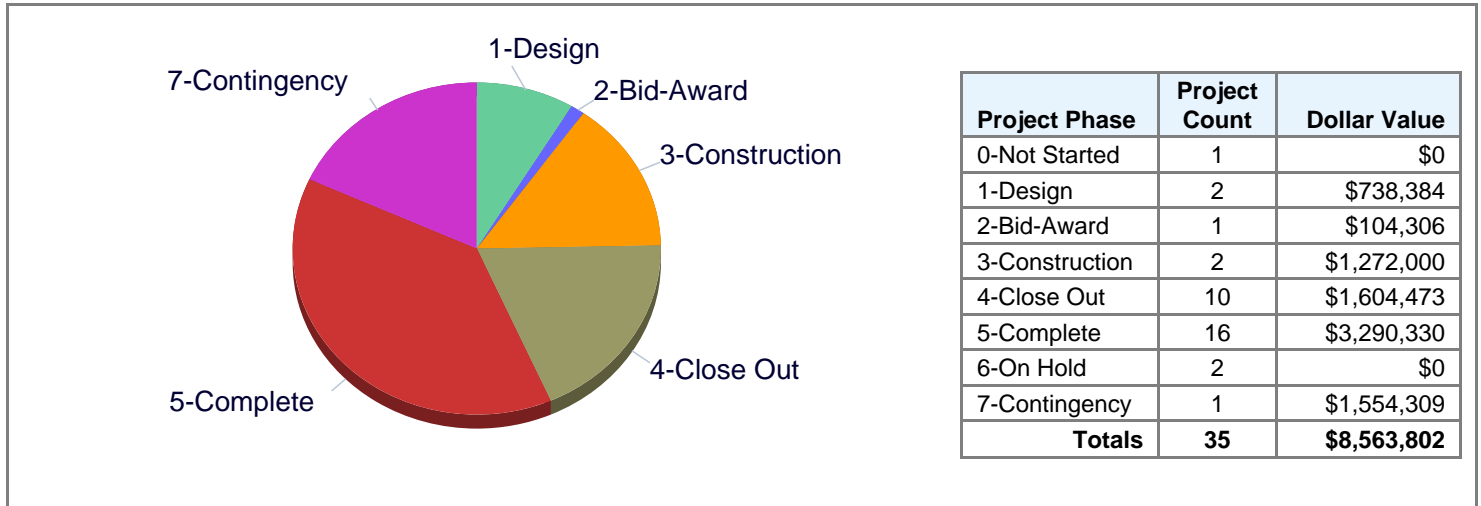
18M Capital Program 2018-2019

Remaining Projects

Project Description	Phase
18M Bell MS Carpet - HVAC - Addition	4-Close Out
18M Creighton MS Addition	4-Close Out
18M Education Services Center 3rd Floor Reconfig	4-Close Out
18M Ken Caryl MS Addition	4-Close Out
18M Summit Ridge MS Development	4-Close Out
18M Program Contingency	7-Contingency

19M Capital Program 2019-2020

Program Dollar Value by Phase



Program Narrative

The 19M Capital Program 2019 -2020 represents Fiscal Year 2019 planned projects that are expected to complete in Fiscal Year 2020. These projects are reviewed by the Capital Asset Advisory Committee.

Program Float Report

Priority	Facility Name	Project ID	Project name	Finish Date	
				Target	Forecast

Program Contingency and Remaining Funds

Program Contingency (Unallocated)	Forecast Remaining Funds in Projects	Net Remaining Program Funds
\$1,554,309	\$51,416	\$1,605,725

19M Capital Program 2019-2020

Remaining Projects

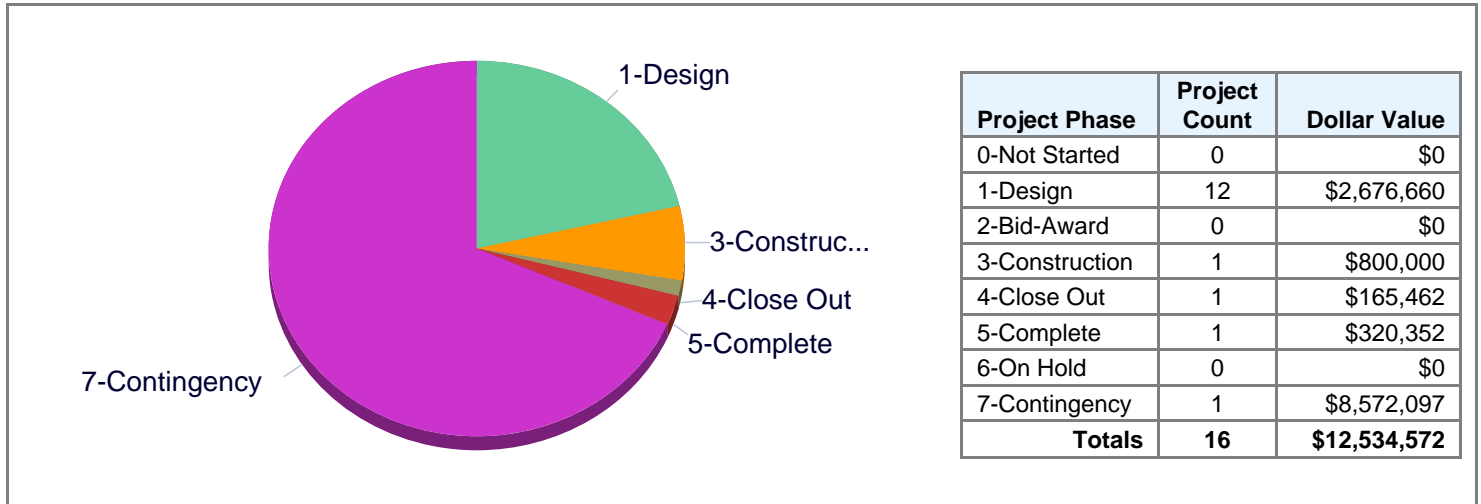
Project Description	Phase
19M DW Energy Conservation Allocation	1-Design
19M DW Small Projects 2 Allocation	1-Design
19M Golden HS School-Based Health Ctr	2-Bid-Award
19M DW FF&E Allocation	3-Construction
19M DW Lock Replacement-Phase V Allocation	3-Construction
19M 581 Conference Place Reopening	4-Close Out
19M 809 Campus Site Lighting	4-Close Out
19M DW Carpet Design Only	4-Close Out
19M DW Fire Alarm	4-Close Out
19M DW Paving	4-Close Out
19M DW Playgrounds	4-Close Out
19M Summit Ridge MS Replace Boilers	4-Close Out
19M Program Contingency	7-Contingency

Plan Year: 2019

Project Description	Phase
19M DW Gym Divider Curtains	4-Close Out
19M DW Irrigation	4-Close Out
19M DW Turf Fields	4-Close Out

20M Capital Program 2020-21

Program Dollar Value by Phase



Program Narrative

The 20M Capital Program 2020 -2021 represents Fiscal Year 2020 planned projects that are expected to complete in Fiscal Year 2021. These projects are reviewed by the Capital Asset Advisory Committee.

Program Float Report

Priority	Facility Name	Project ID	Project name	Finish Date	
				Target	Forecast

Program Contingency and Remaining Funds

Program Contingency (Unallocated)	Forecast Remaining Funds in Projects	Net Remaining Program Funds
\$8,572,097	\$8,339	\$8,580,436

20M Capital Program 2020-21

Remaining Projects

Project Description	Phase
20M 809 Campus Fabric Storage Shelter	1-Design
20M Alameda Int'l HS Auditorium Renovation	1-Design
20M Applewood Cottages Offices for EAP	1-Design
20M D'Evelyn Jr-Sr HS Utilities for Temps	1-Design
20M DW Planning & Design Allocation	1-Design
20M DW Property Disposal Allocation	1-Design
20M DW Small Projects 1 Allocation	1-Design
20M DW Small Projects 2 Allocation	1-Design
20M DW Temp. Bldg. Lease Allocation	1-Design
20M DW Utilization Allocation	1-Design
20M DW Water Engineering Allocation	1-Design
20M Parmalee ES School Zone Enhancements	1-Design
20M Golden HS Chiller Replacement	3-Construction
20M Free Horizon Montessori RTU Repair	4-Close Out
20M Program Contingency	7-Contingency

**Department of Construction Management
Program Financial Summary Report**



Date: Mar 30, 2020

Program		Program Contingency (Unallocated)	Forecast Remaining Funds in Projects	Net Remaining Program Funds
H	H Bond Program 2019-23(1)	\$51,505,857.00	(\$18,818,335.18)	\$32,687,521.82
18M	18M Mini Program 2018-19	\$22,482.60	\$26,048.76	\$48,531.36
19M	19M Mini Program 2019-20	\$1,554,309.41	\$51,415.94	\$1,605,725.35
20M	20M Mini Program 2020-21	\$8,572,097.28	\$8,338.81	\$8,580,436.09
Total:		\$61,654,746.29	(\$18,732,531.67)	\$42,922,214.62

Capital Asset Advisory Committee Meeting Notes

Thursday, March 5, 2020

Attending

Members: Gordon Calahan, Megan Castle, George Latuda, Tom Murray, Bret Poole, Brittney Warga, Jeff Wilhite

Staff: Kathleen Askelson, Steve Bell, Stephanie Corbo, Heather Frizzell, Bruce Huxley, Berry Jones, Nat'e Morrell, Tim Reed, Nicole Stewart, Robin Acree

Community Member: Terri Nielson

Location: Main Conference Room, 809 Quail Street, Bldg. 4, Lakewood, CO 80215 Time: 8:00-10:00am

General

- CIP Update-Presentation
 - Currently we have \$50 million in contracts on the Board agenda, seven are construction and two are consultant contracts.
 - We are noticing bids coming in under budget for the majority of the projects.
 - Eiber and Belmar will move to April bid.
 - \$20 million in work will be starting in March. Early fall we will bid approximately another \$30M.
 - Charter projects getting consultants onboard.
 - Kendrick Lakes scheduled to open in January 2021.
- Work in Progress Report-Presentation
 - Conifer HS and West Jefferson MS is starting one year ahead of schedule.
 - Trailblazer Stadium is currently using temps for locker rooms. We are extending the seating capacity. We will now be able to host state playoff games. The funds were included in the capital improvement plan not 5B.
 - There was a surprise in four elementary and one middle school sprinkler systems. The sprinkler heads have been identified on what was recalled and needs to be replaced. This work will be funded from our building maintenance budget. The work should take approximately a week once started.

Communications

- Signs thanking voters will be going up around the district starting spring break week.
- Multiply groundbreaking are in the works.
- Planning tours to see completed/in progress construction projects once the weather warms up.

Planning/Property Management Update

- General Updates:-Planning & Property has been working with Career Tech on the Perkins Grant. The grant will provide vocational equipment, software and 3-D printers.
- Temp removal-2 sets of removals-29 from separate contracts and 8 will be due to construction projects.
- Enrollment Update: - Final draft will be published next week. Next CAAC meeting Bruce will present the numbers.
 - Summary of Finding will be published at the end of April

Construction Management Update

- H-Bond-49% of bond projects are initiated
- 18M Programs-Summit Ridge fire alarms and boilers
- 19M Programs-closed out
- 20M Programs-will be funding for capital transfer